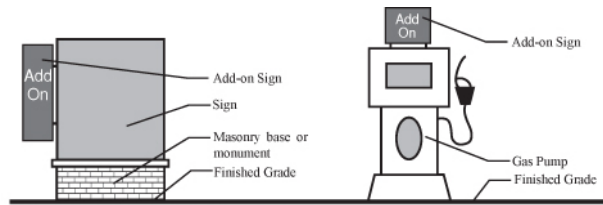
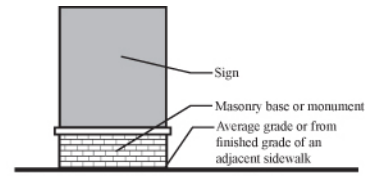
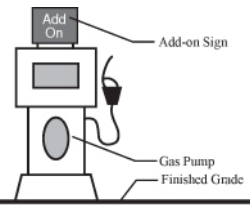




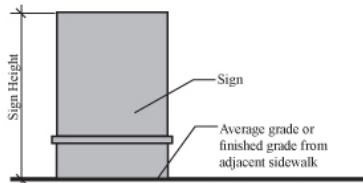
In 2006, CWA (in association with Hamilton Anderson Associates) updated Canton Charter Township's Sign Ordinance. These wholesale upgrades featured updated definitions, modernized graphics, and reader-friendly organization/formatting.



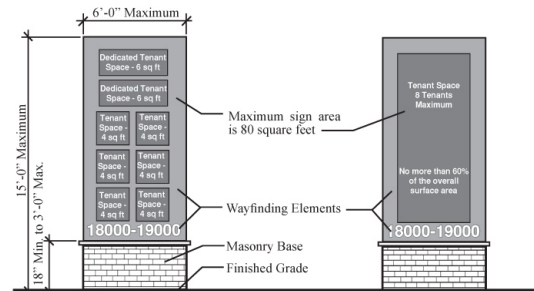
**6A.01.02 Add-On Sign**



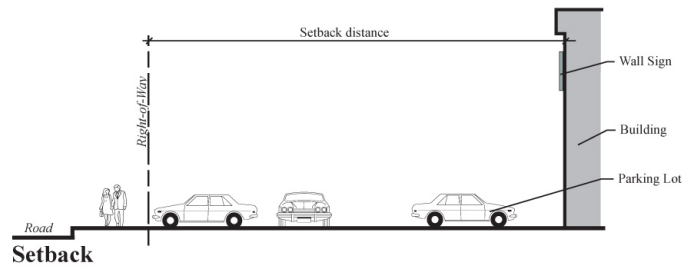
**6A.01.17 Ground Sign**



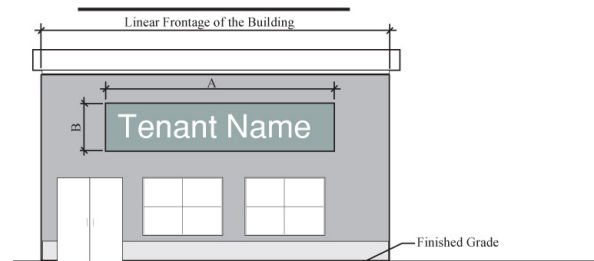
**6A.01.36 Sign Height**



**6A.22.04 Multiple Tenant Signs**



**6A.17 Sign Area**



**6A.17 Sign Area**

• Sign Area Calculation:  
Linear Frontage of Building or Tenant Space X one square foot = Total square foot of Wall Sign (A x B)