



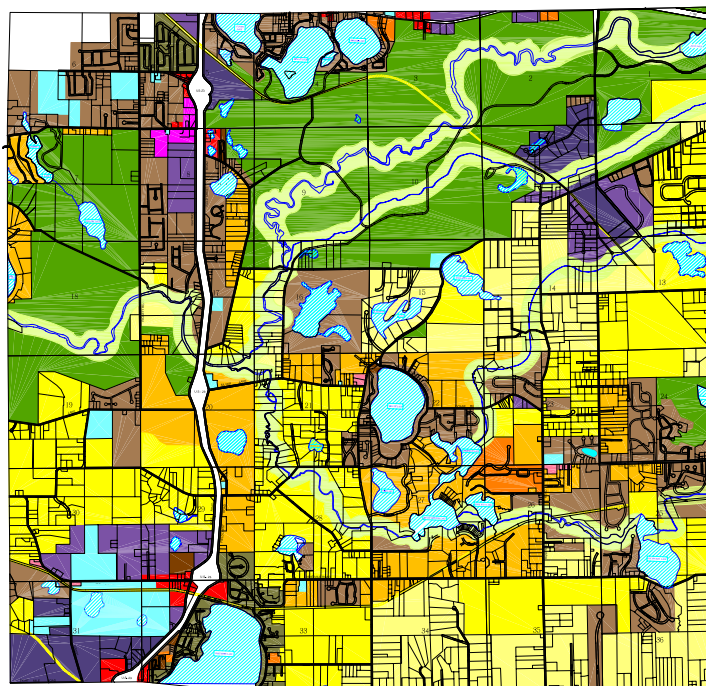
Green Oak Township Master Plan

Green Oak Township is a rapidly growing community located within Southeastern Livingston County, Michigan. Over the years, the Township has been faced with growth management issues and concerns that important natural resources were being threatened by rapid development. The 1997 Master Plan and the 2000 Update was designed as a plan for the preservation of rural character and environmental resources.

The plan was based upon citizen workshops and a community wide survey which solicited citizen input. This input helped formulate community goals which in turn were translated into specific objectives and strategies for future implementation. The Master Plan also incorporated a detailed analysis of background studies, including an inventory of important environmental resources, traffic analysis, community facilities, commercial services, economic base and population and housing.

After numerous work sessions with the Planning Commission, alternative draft land use plans were considered. The land use alternatives were reviewed in light of environmental constraints and other community factors. Public input was received to help further refine the alternatives. Once a final draft plan was selected, a public hearing was conducted and input from the Livingston County Planning Commission and Township Board was considered.

The Green Oak Township Master Plan has provided innovative planning solutions and growth management strategies which will help provide guidance for future development and rural preservation for years to come.



Legend

[Light Yellow]	Very Low Density Residential, 1 d.u./5 ac.
[Yellow]	Low Density Residential, 1 d.u./2 ac.
[Orange]	Medium Density Residential, 1 d.u./1 ac.
[Brown]	Suburban Density Residential, 1 d.u./1/2 ac.
[Dark Brown]	High Density Residential, 1 d.u./less than 1/2 ac.
[Light Blue]	Multiple Family
[Dark Blue]	Mobile Home Park
[Pink]	Local Commercial
[Red]	General Commercial
[Magenta]	Research - Office
[Purple]	Light Industrial
[Dark Purple]	General Industrial
[Cyan]	Public - Semi-Public
[Green]	Recreation - Conservation
[Blue Line]	Natural River

